

Training Needs Analysis

Heather Beach
September 2010

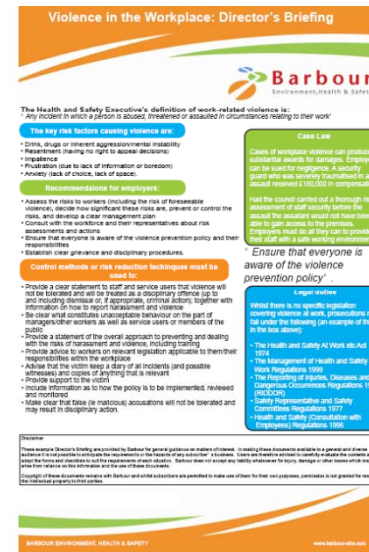
Barbour EHS

- Barbour has been providing reference information and tools to health and safety professionals for over 40 years.
- Part of large media group – United Business Media (also owns SHP magazine and IOSH show)



How can we help?

- Barbour subscribers have access to a series of validated, updated and peer reviewed resources for the professional to save time and ensure consistency of approach.
 - Guides
 - Model policies
 - Forms and checklists
 - Toolbox Talks
 - CPD webinars
 - Current Awareness





Home

A-Z Barbour Resources

Browse Topics

Document Library

Legislation Diary

The Briefing

International

CPD

My Account

Contact Us

Search

in

Document Library



[Advanced Search](#)
[Search Tips](#)

You are in: [Home](#) > [Browse Topics](#) > [Fire](#) > Flammable Gases, Liquids and Explosive Atmospheres

▼ **Browse**

▼ Fire

▼ Flammable Gases, Liquids and Explosive Atmospheres

Flammable Gases, Liquids and Explosive Atmospheres

Definition

Technical Guides

Director's Briefing

Employee Factsheet

Toolbox Talks

Model Policies

Forms & checklists

Permits to Work

Key documents

Title	Publisher	Reviewed Date	Click To Do
COSHH	BARB	July 2009	
Fire Prevention	BARB	July 2009	


Bookmarks Options

Bookmarks

?

?

Toolbox Talks




COSHH

The Control of Substances Hazardous to Health Regulations (COSHH) (as amended) restrict the presence and use of substances in the workplace that are 'hazardous to health'. Employees must be given information, instruction and training on the use of such substances.


What should you know?

If you work with hazardous substances then you should be familiar with:


- any risks to health caused by exposure
- precautions which should be taken
- necessary control measures - their purpose and how to use them
- how to use personal protective equipment (PPE)
- emergency procedures
- results of any workplace monitoring
- your occupational health record.



HARMFUL



IRRITANT




TOXIC


Action to take

Both employers and employees have responsibilities under COSHH. Employees must:


- co-operate with their employer eg. by attending training courses
- always use control measures designed to reduce exposure
- wear the PPE provided
- report any problems with PPE or other equipment
- report non-compliance with safe systems of work
- attend occupational health checks
- participate in the risk assessment process.



VERY TOXIC



CORROSIVE



EXPLOSIVE

Barbour Toolbox Talks on..... COSHH 2009

Windows Internet Explorer browser window showing the URL: <http://www.barbour.info/WebServicesV4.1/3EA29993-C537-464A-BDE4-7AA46F584901/201008111019349801389.pdf>. The address bar includes navigation buttons (back, forward, refresh, stop) and a search box labeled "Live Search". The menu bar includes "File", "Edit", "Go To", "Favorites", and "Help". The toolbar shows icons for printing, saving, and navigation, along with a "Find" search box.

Bookmarks sidebar panel with a "Bookmarks" folder containing a sub-folder named "Bookmarks". The sidebar includes a close button (X), an "Options" dropdown, and a search icon. At the bottom, there are icons for a paperclip and a speech bubble.

Toolbox Talks



COSHH

Please read through the handout carefully. Then when you have finished, fill out the following questions and give this page only back to the person in charge of the toolbox talk.

Q: What should you do if you notice that an agreed safe system of work is not being followed?

A:

Q: How can you identify a substance that is hazardous to health?

A:

I have read and understood the information set out above:

Name:

Signature:

Date:

Fire Prevention

How do fires start?

Before a fire can start in a room in a building, three things are needed:

- **Heat** - a source of ignition eg faulty or misused electrical equipment
- **Fuel** - something that will burn eg soft furnishings, dry waste or packaging materials
- **Oxygen** - found in the atmosphere eg, natural airflow through doors and windows and from air-conditioning systems.

If any one of these is missing, a fire cannot start.

It is important that steps are taken to avoid the three coming together and thereby reduce the chances of a fire occurring.



E-learning

Working at Height
Asbestos Awareness
Display Screen Equipment
Electrical Safety
Electro Magnetic Field (EMF) awareness
Environmental Awareness
Fire Safety Awareness
Health and safety Induction
Managing Safety Awareness
Manual Handling Awareness
Noise Awareness
Office Safety
Stress Awareness for Employees
Stress Awareness for Managers
AND IOSH Working Safely



OFFER

50 free licenses for any one of their 15 titles (excludes IOSH Working Safely).

Includes the use of the record management and reporting system and all support for 1 year



Consulting services

- We can assist in the assessment of your organisational training needs
- We can run in house training for you – examples of courses we run:
 - Accident investigation
 - IOSH Safety for Senior Executives

Barbour EHS

Barbour is used by over 1000 blue chip organisations and enforcement agencies

“Our goal is to ensure a cost effective approach to H&S risk management”

<http://www.barbour-ehs.com/consultancy>

heather.beach@ubm.com

01344 899310

